

# PLAT OF FRENCHMAN'S CREEK

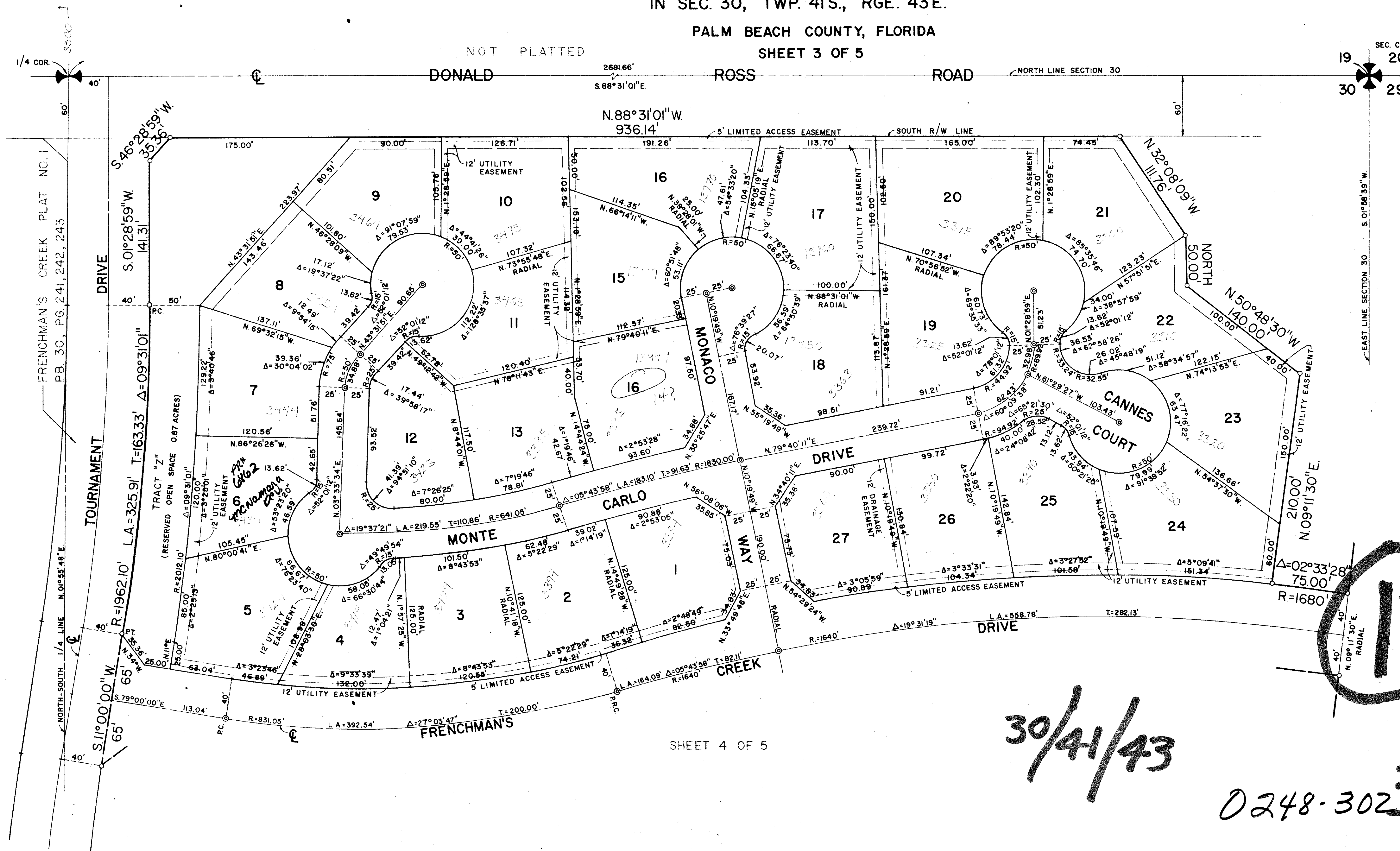
PLANNED UNIT DEVELOPMENT  
PLAT NO. 2

IN SEC. 30, TWP. 41S., RGE. 43E.

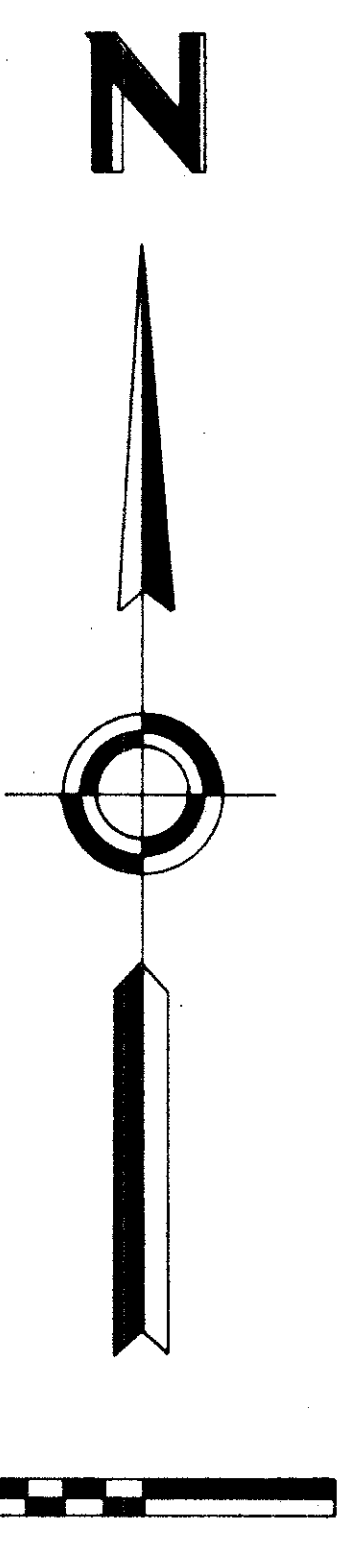
PALM BEACH COUNTY, FLORIDA

SHEET 3 OF 5

73



SEC. COR.  
19 20  
30 29



30/41/43

0248-30235/73

SHEET 4 OF 5

SHEET 3, PLAT NO. 2		
PLAT OF FRENCHMAN'S CREEK		
WILLIAM G. WALLACE, INC. Consulting Engineers & Land Surveyors U.S. Highway One, North Palm Beach, Florida		
FIELD: T.B.	JOB NO.:	FILE NO. 30-41-43
OFFICE: J.B.F.	DATE: 4, MARCH 1975	DWG. NO.: LD74-1033
CK'D: D.D.D.	REF:	SHEET 3 OF 5

## FRENCHMAN'S CREEK - PLAT #2